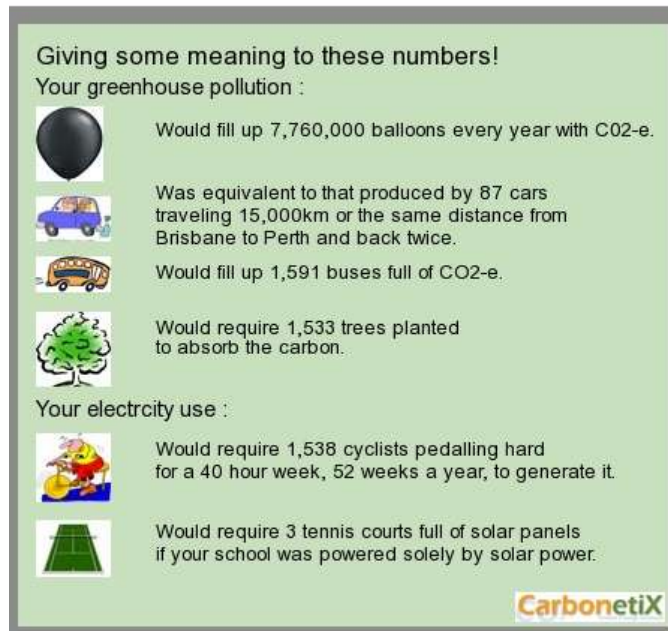


The School Environment Tracking System

Developed for school administration and teaching staff to measure, manage and reduce their school's energy, water consumption and waste.



SETS - wipes out Greenwash

1. Makes sustainability easy and fun to understand
2. Quantifies energy, greenhouse, water, waste & paper savings
3. Shows progress against targets
4. Motivates by comparing your school with other schools
5. Provides fast feedback – the success or failure of an initiative can be seen the next bill
6. Raises awareness by pushing its data out to the school
7. By measuring it enables management which results in schools that are genuinely more sustainable

Key Features:

- On-line system, operating on any computer & all operating systems (Windows, Mac, Linux)
- Accurate reporting: incorporates state by state emissions factors updated annually from AGO data
- Developed over 3 years in collaboration with schools, greenhouse alliances, CERES and Departments of Education.
- Low cost : \$150 set up & \$100 per year

What schools have to say about SETS

"SETS has been a powerful teaching and learning tool at Western Port Secondary College and has helped us to measure our progress in reducing green house gas emissions and becoming a sustainable school."

Hannah Lewis, Assistant Principal,
Westernport Secondary College

"Our school has been part of the Sustainable Schools Initiative around the Castlemaine area and through some retrofits and major behaviour changes we have made quite an impact on our energy consumption levels."

"We are using SETS to record our gas, electricity and water usage here at school and just wanted to let you know that it is a great system. The school bursar loves it, finds it easy to use and appreciates the reminders the program sends when a new bill is due. The graphs are really useful for monitoring consumption and in our case have been very encouraging as we have watched the lines go down. The challenge of course is to keep them down. I have used the graphs to publicise results within our community, for staff, school council, the students, to great effect. Thanks."

Clare Melgaard, Principal.
Castlemaine North Primary

Use SETS to:

- Educate students on sustainable living
- Monitor your progress in reducing usage
- Set your school a target and reach it
- Compare your school to others
- Do an audit of what's left on and improve switch off practices
- Complete your Sustainable School modules

Educate For The Future

Giving some meaning to these numbers!

Your water usage:

- has so far reduced by 2,436,398 glasses of drinking water
- has reduced by 609,000 cartons full of milk. Keep up the good work.

Giving some meaning to these numbers!

Your greenhouse pollution:

- was equivalent to that produced by 178 cars
- would fill up 2021 ton carriages
- would require 2050 trees planted each year to absorb the carbon

Your electricity use:

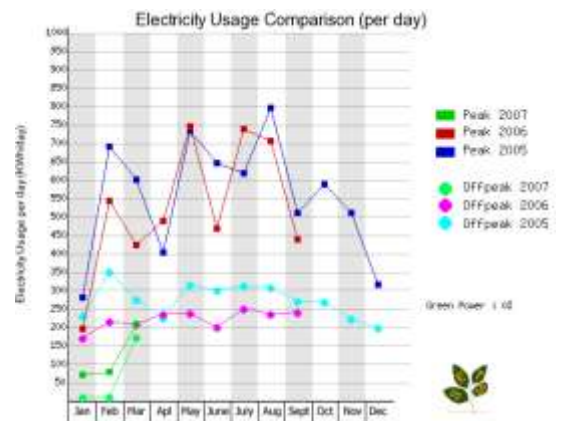
- required 193 tonnes of coal
- would require 2349 cyclists pedalling hard for a 48 hour week, 52 weeks a year, to generate it
- would require 12.5 tennis courts full of solar panels if your school was powered solely by solar power.

Giving some meaning to these numbers!

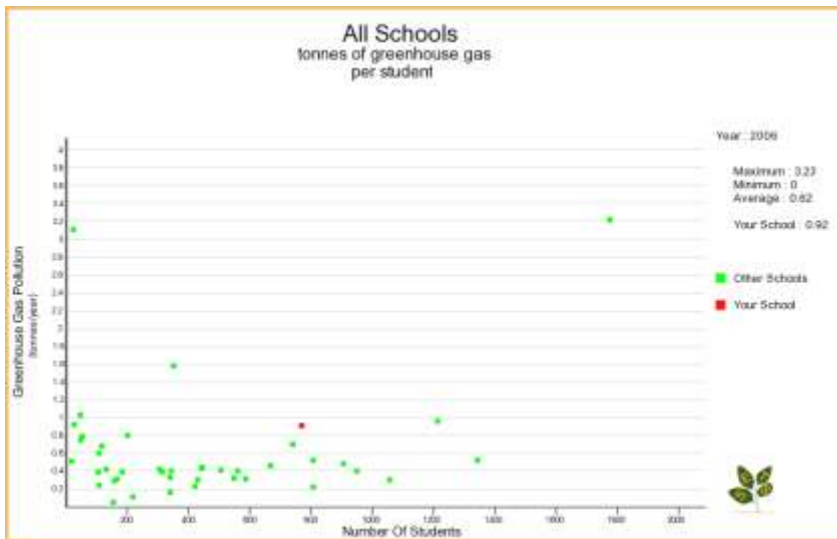
Your contribution to land fill in 2006:

- was equal to that of 54 home sized swimming pools
- would fill 5075 wheeled bins full of rubbish
- would fit into 34 classrooms
- 296 cars packed with rubbish

Monitor Your Progress



Compare Your School



Reach Your Targets



Energy Source	Measurement	2006	2006	Yearly Reduction	Percent Reduction
Electricity*	Usage (kWh)	292,863	189,158	103,705	35%
	Cost (\$)	46,537	23,922	22,615	49%
	Greenhouse pollution (tonnes/CO ₂ -e)	430	277	152	35%
Natural Gas*	Usage (GJ)	1,585	684	901	57%
	Cost (\$)	10,959	5,256	5,703	52%
	Greenhouse pollution (tonnes/CO ₂ -e)	101	43	57	57%
Yearly Totals	Usage (GJ)	2,639	1,365	1,274	48%
	Cost (\$)	57,496	29,178	28,318	49%
Yearly Metrics	Greenhouse pollution (tonnes/CO ₂ -e)	530	321	209	39%
	Number of Students	868	839		
Yearly Metrics	Greenhouse pollution per student (tonnes CO ₂ -e/student)	0.61	0.38	0.23	38%

To sign up or for more information visit www.schoolenergysavings.com.au

Or contact CarbonetiX on 03 9015 8344

support@schoolenergysavings.com.au or www.carbonetix.com.au